

POWER  
MAP  
geographic presentation tool

**ArabiaGIS s.a.l**



# ArabiaGIS

ArabiaGIS is a company owned & managed by:



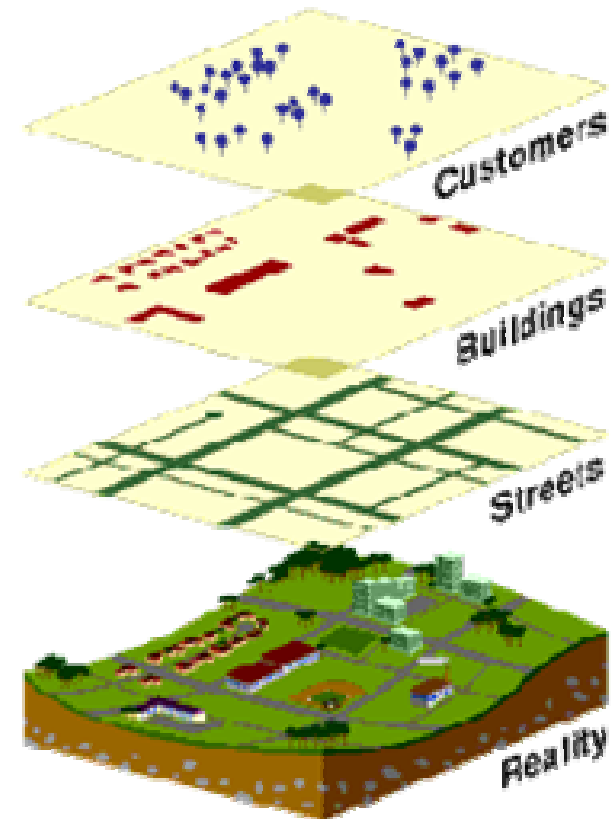
Aims at commercializing the Geographic Information System by providing a wide range of Products and services for Consumers, Businesses, Professionals, and Intellectuals

2/3/2005



# GIS

GIS combines layers of information about a place with base Geographical Maps to give you a better understanding of that place, the layers of information you combine depends on your purpose

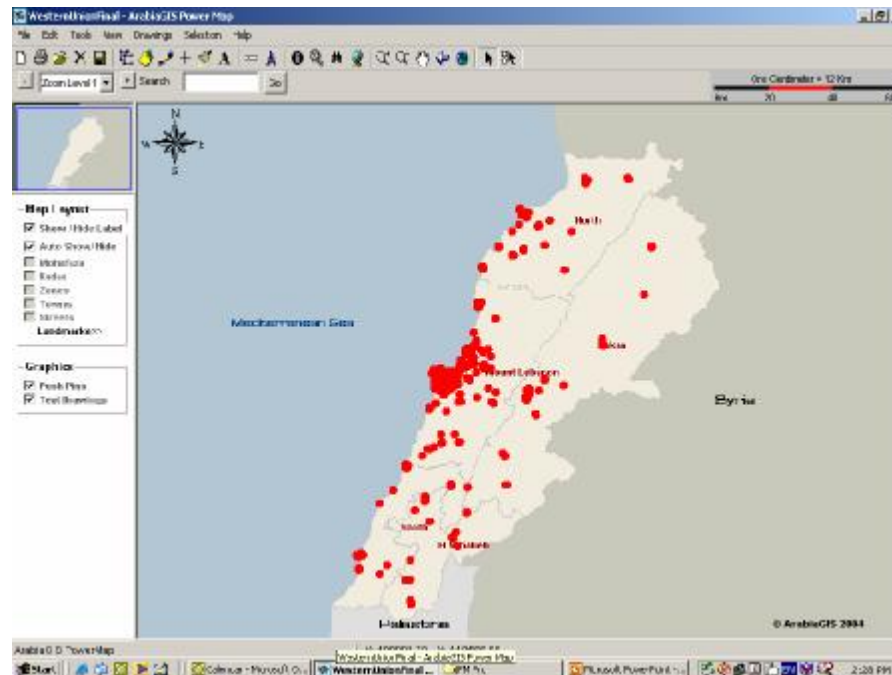


# PowerMap

- A Geographic Presentation Tool
- Developed by ArabiaGIS based on GIS Technology
- Includes All Mohafaza, Kadaa, Zone & Street data of Lebanon
- Gives the user the ability to put his/her Data on Maps
- Used for Presentation & Reporting

# PowerMap Functionalities

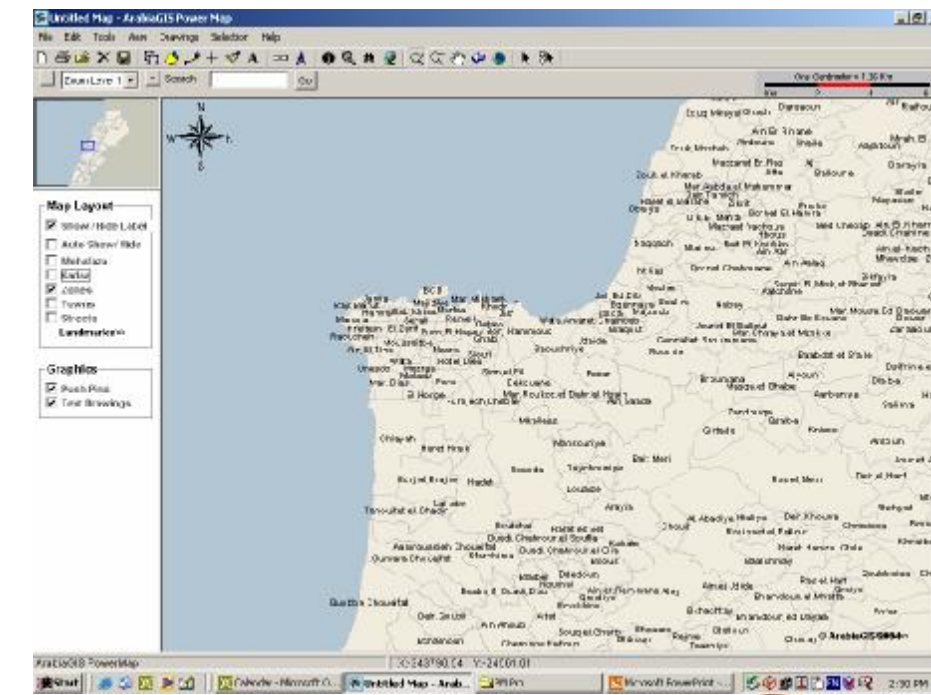
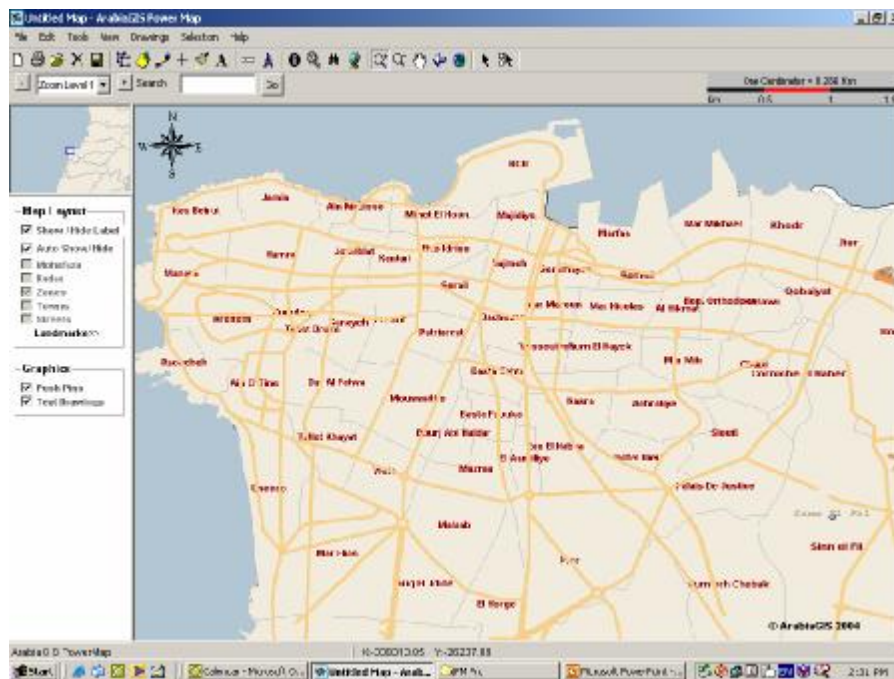
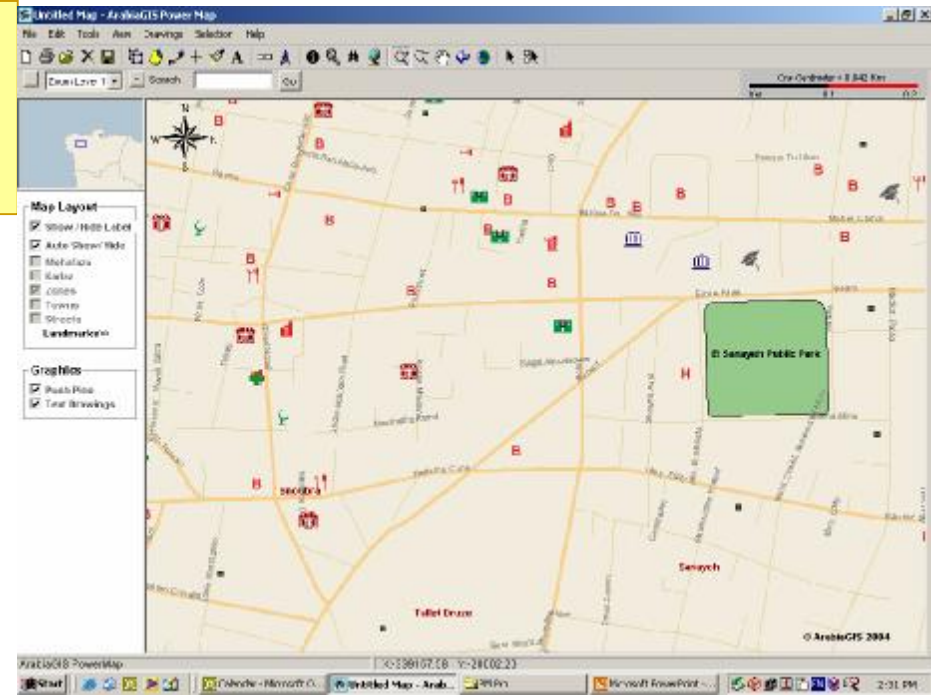
Using Power Map, You Can:

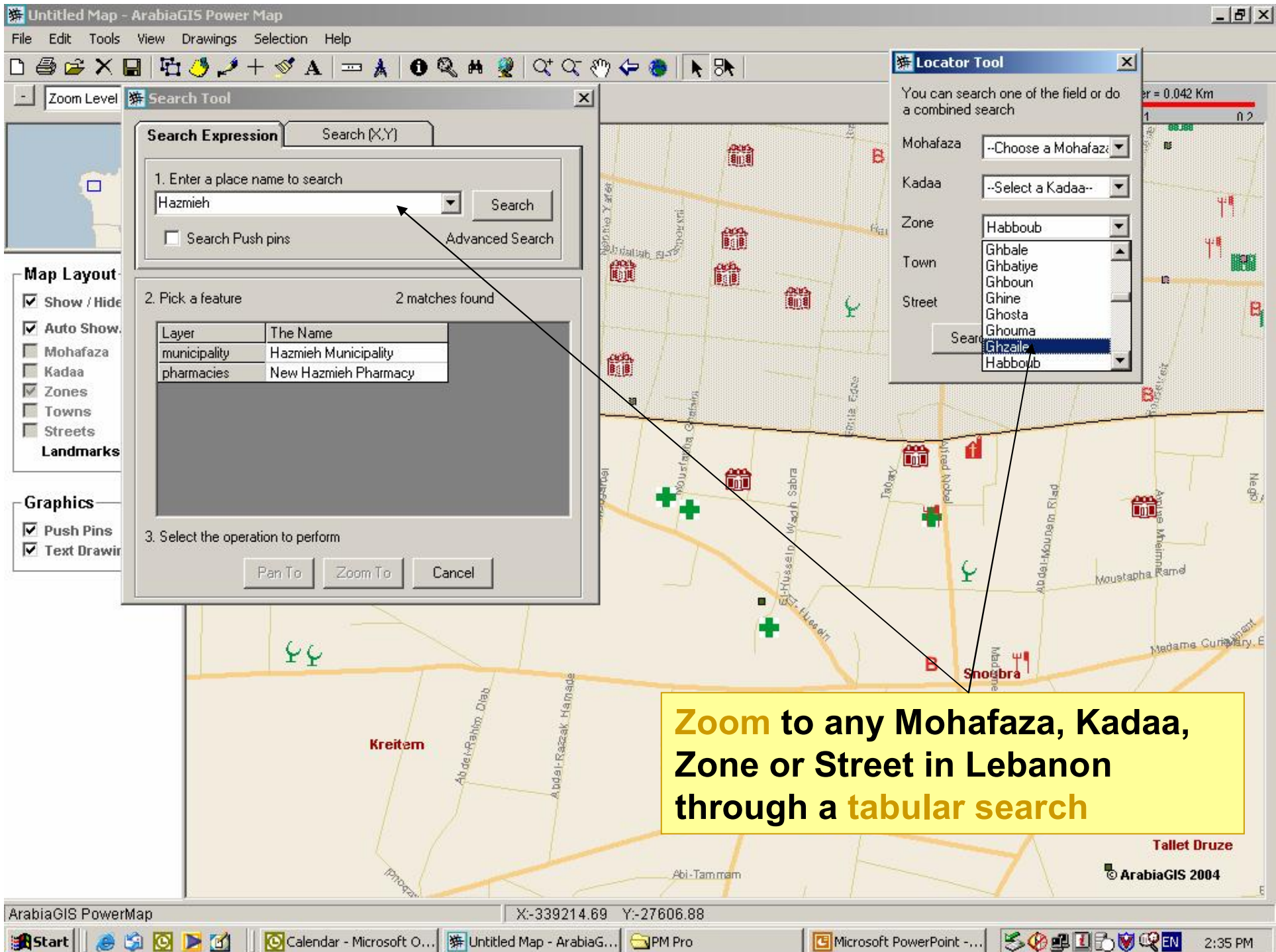


2/3/2005

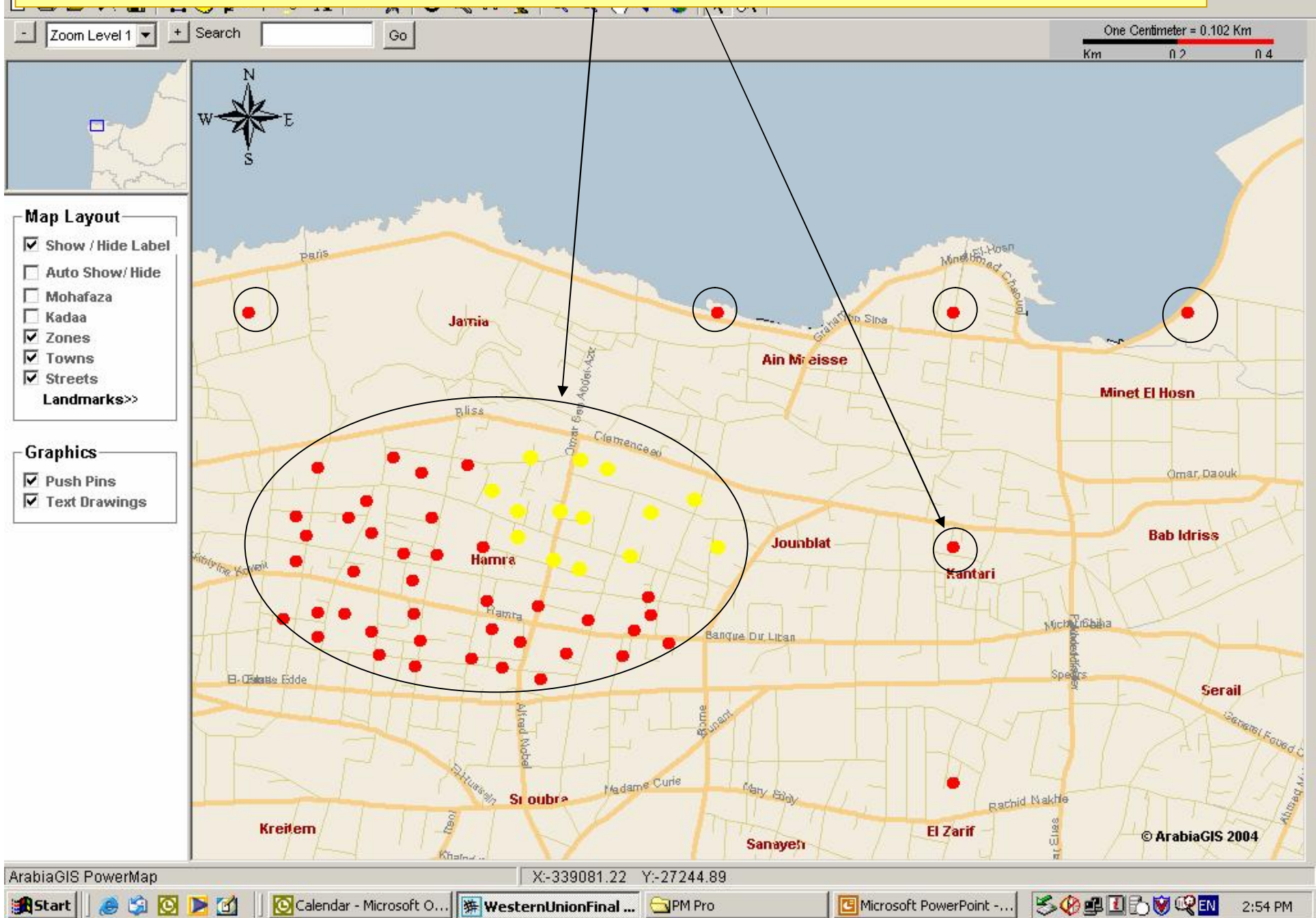


# Browse Lebanon Mohafaza, Kadaa, Zones, Streets & Landmarks

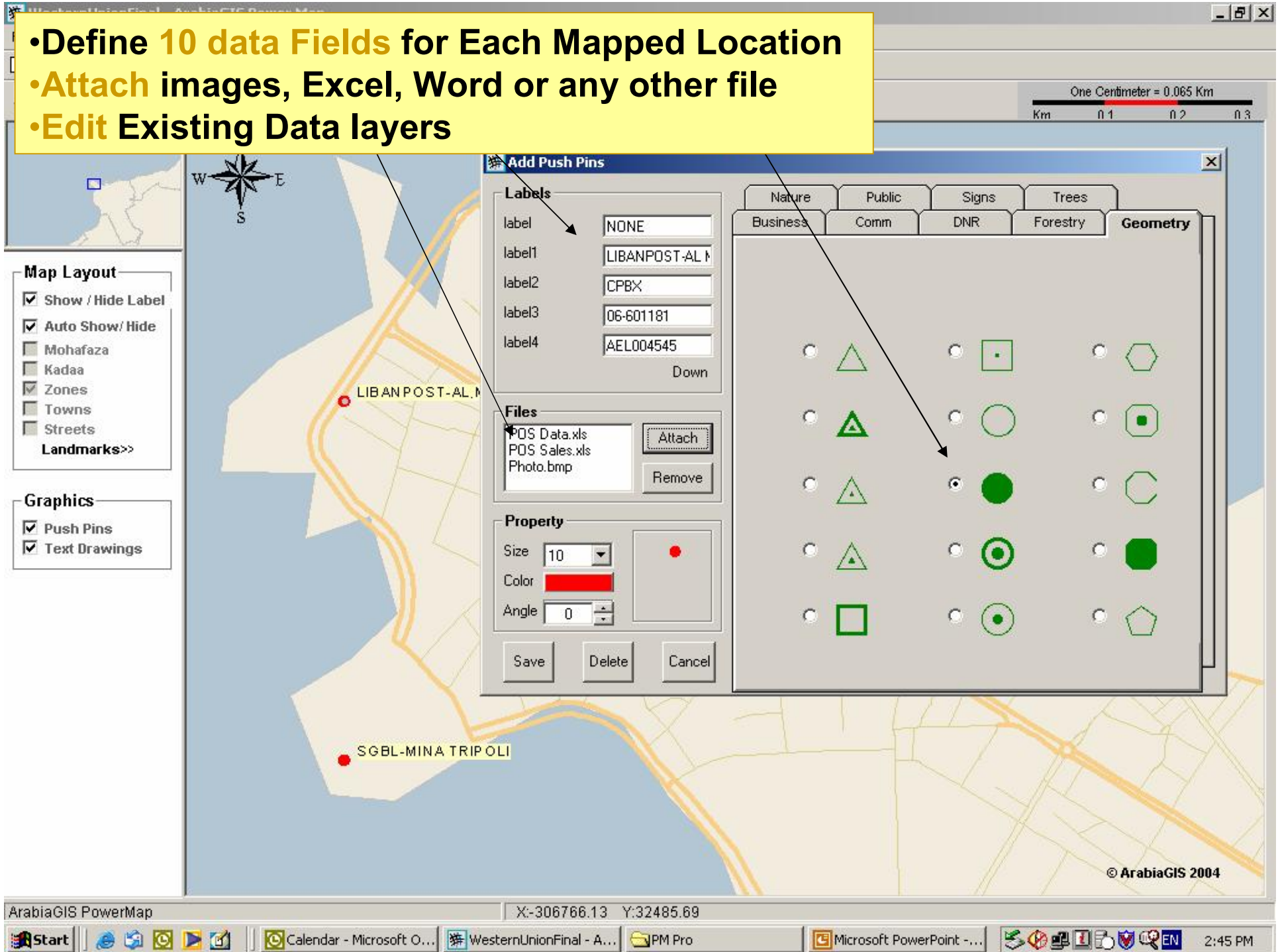




# •Create Geographical Data layers representing clients & Markets



- Define 10 data Fields for Each Mapped Location
- Attach images, Excel, Word or any other file
- Edit Existing Data layers



# Search (Filter) your Data & perform a combined search

The screenshot shows the ArabiaGIS PowerMap interface. At the top, a yellow banner reads "Search (Filter) your Data & perform a combined search". Below this, the main map area displays Saudi Arabia with several red circular markers. A compass rose and a scale bar (1:100,000) are visible. On the left, there are panels for "Map Layout" and "Graphics".

The "Advanced Search" dialog box is open, showing search criteria and a report table. The "Find Label" section has "Exact" selected and "Generate Report" checked. The "label" field contains "MT". The "Location" section has dropdown menus for "Mohafaza", "Kadaa", and "Zone". The "Report" section contains a table with 5 columns: Icon, Label 1, Label 2, Label 3, Label 4, and Label 5. The first two rows of data are visible, each with a red circular icon. To the right of the table is a "Report Name" field containing "report1" and buttons for saving and printing.

At the bottom, another yellow banner reads "Generate Tabular reports & Save them into Excel". The Windows taskbar at the very bottom shows the Start button and several open applications, including "Advanced Sea...".

**Generate Maps highlighting your search results & Save them, Print them or save them in Jpeg image format**

The screenshot displays the ArabiaGIS PowerMap interface. A map of Lebanon is shown with numerous red pushpins indicating search results. The map is divided into regions: North, South, and El Nabatieh. The Mediterranean Sea is to the west, and Syria and Palestine are to the east. A scale bar at the top right indicates 12 Km. A menu is open on the left, with 'Send Map' selected, and a sub-menu showing 'As Image' and 'High Resolution' options. A compass rose is visible in the top left corner. The bottom status bar shows the coordinates X:290572.15 and Y:126585.47. The Windows taskbar at the bottom includes icons for Start, Internet Explorer, Outlook, WesternUnion, JPM Pro, and Microsoft Power...

Save  
Save As  
Delete Map  
Print Map  
Send Map  
Import Data  
Export To Excel  
Exit PowerMap

Mohafaza  
Kadaa  
Zones  
Towns  
Streets  
Landmarks>>

Graphics  
Push Pins  
Text Drawings

Mediterranean Sea  
North  
South  
El Nabatieh  
Palestine  
Syria  
Kadaa  
Mount Lebanon

Centimeter = 12 Km  
km 20 40 60

© ArabiaGIS 2004

ArabiaGIS PowerMap X:290572.15 Y:126585.47

Start | Inbox - Microsof... | WesternUnion... | JPM Pro | Microsoft Power... | 3:15 PM

- Measure Branch Catchments Area's
- Measure Distance Between Points

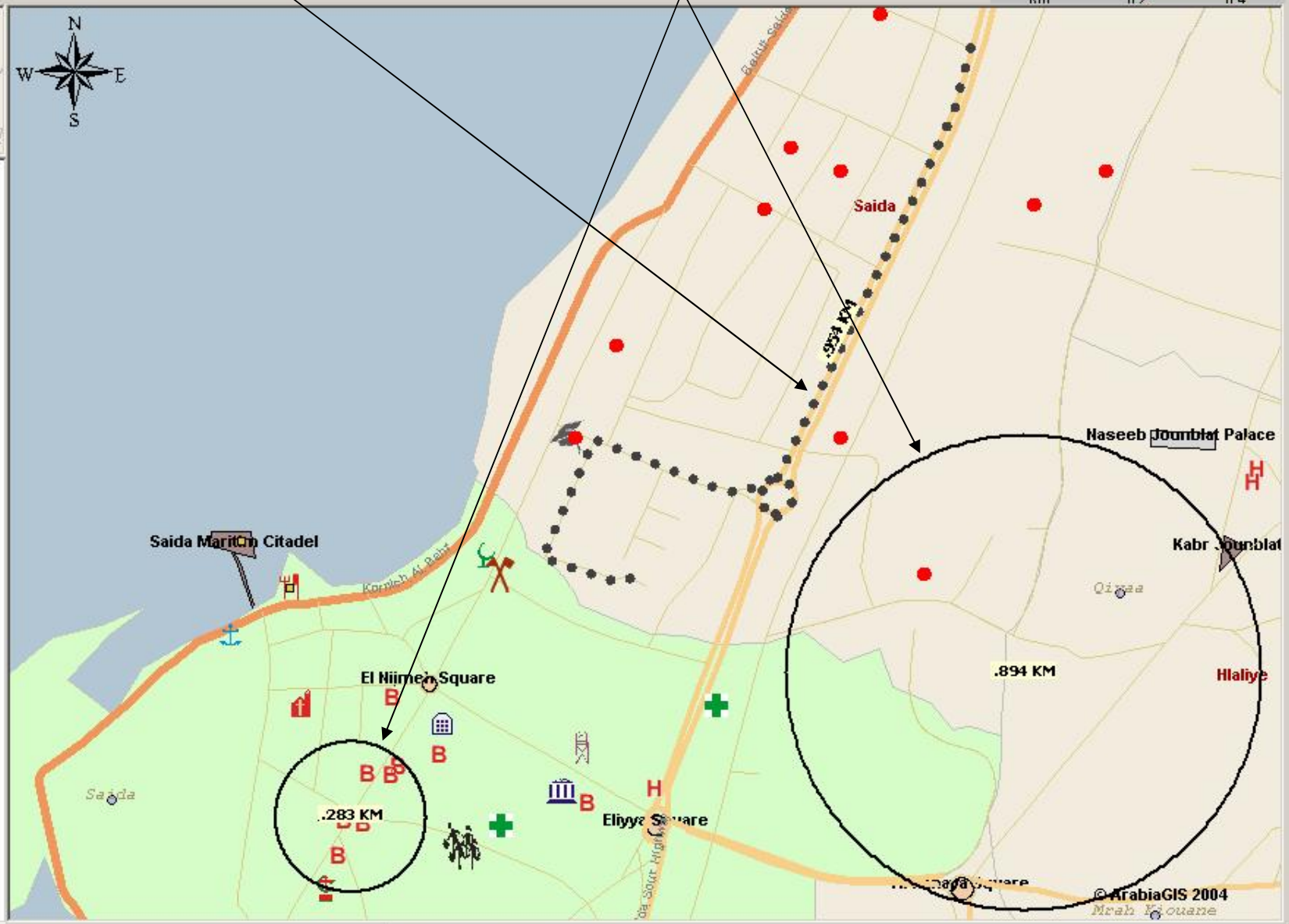
One Centimeter = 0.103 Km  
Km 0 2 4

**Map Layout**

- Show / Hide Label
- Auto Show/ Hide
- Mohafaza
- Kadaa
- Zones
- Towns
- Streets
- Landmarks>>

**Graphics**

- Push Pins
- Text Drawings





Zoom Level 1 Search mazra Go

One Centimeter = 0.043 Km  
Km 0 1 2

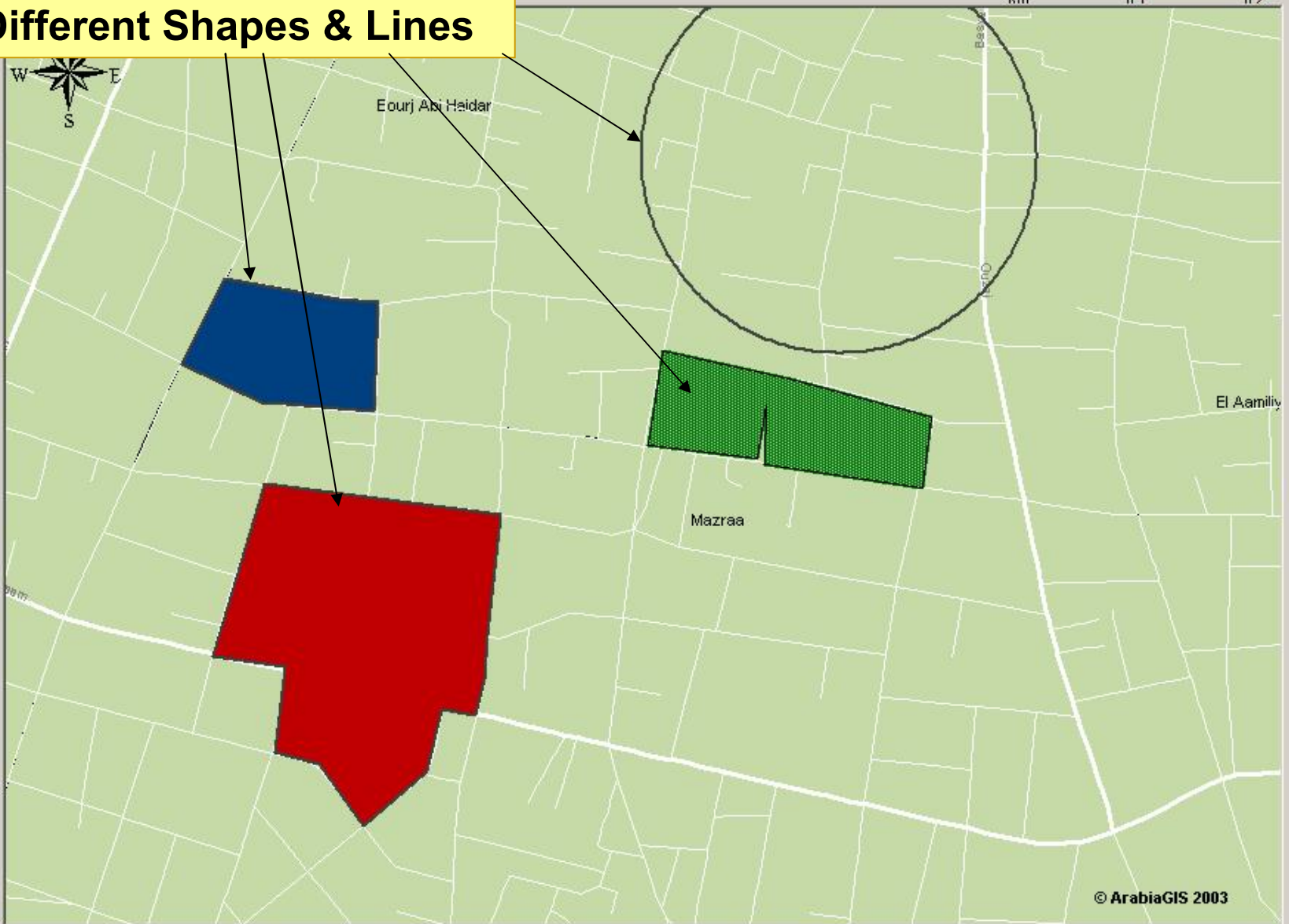
# Draw Different Shapes & Lines

## Map Layout

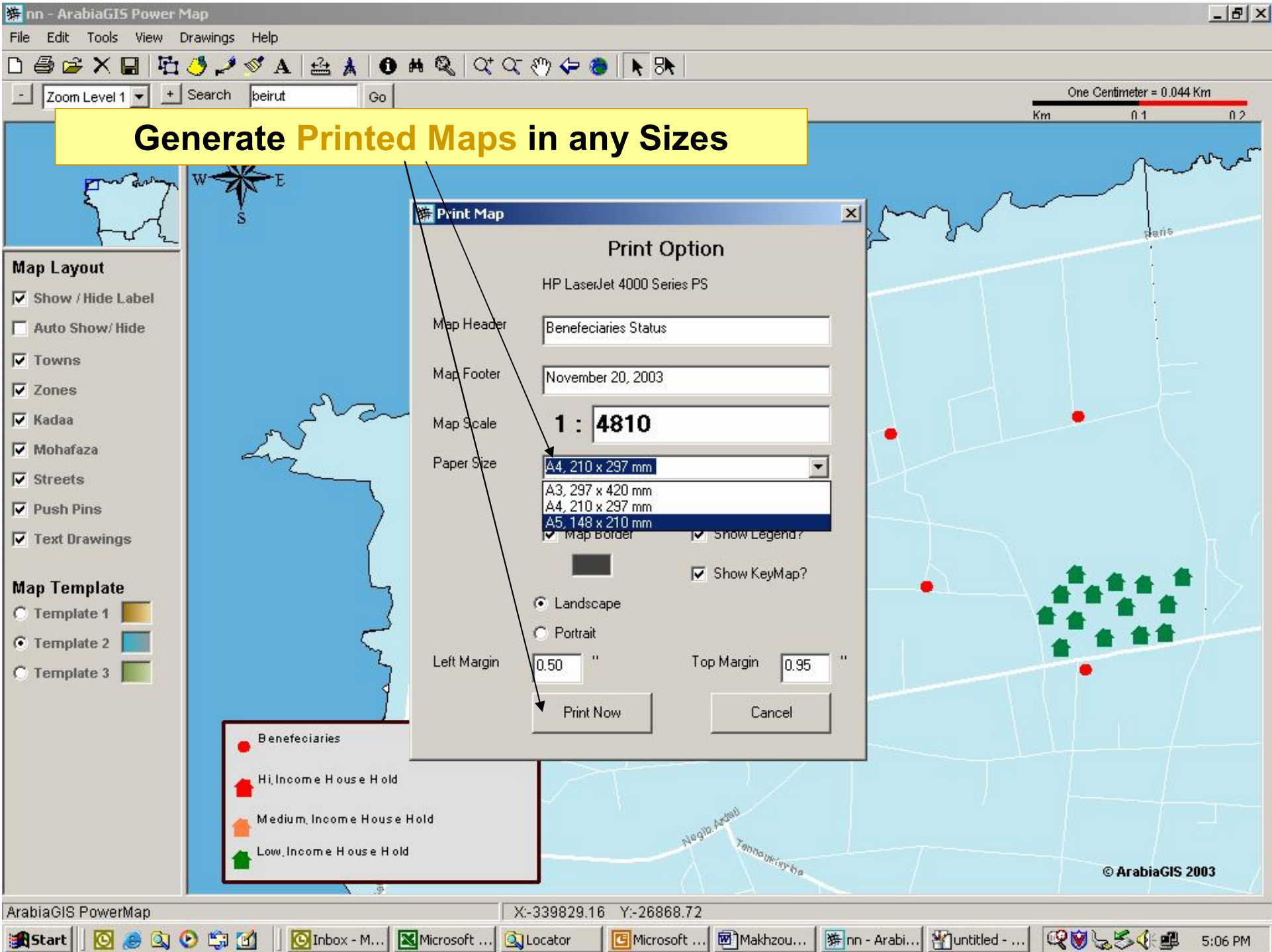
- Show / Hide Label
- Auto Show/ Hide
- Towns
- Zones
- Kadaa
- Mohafaza
- Streets
- Push Pins
- Text Drawings

## Map Template

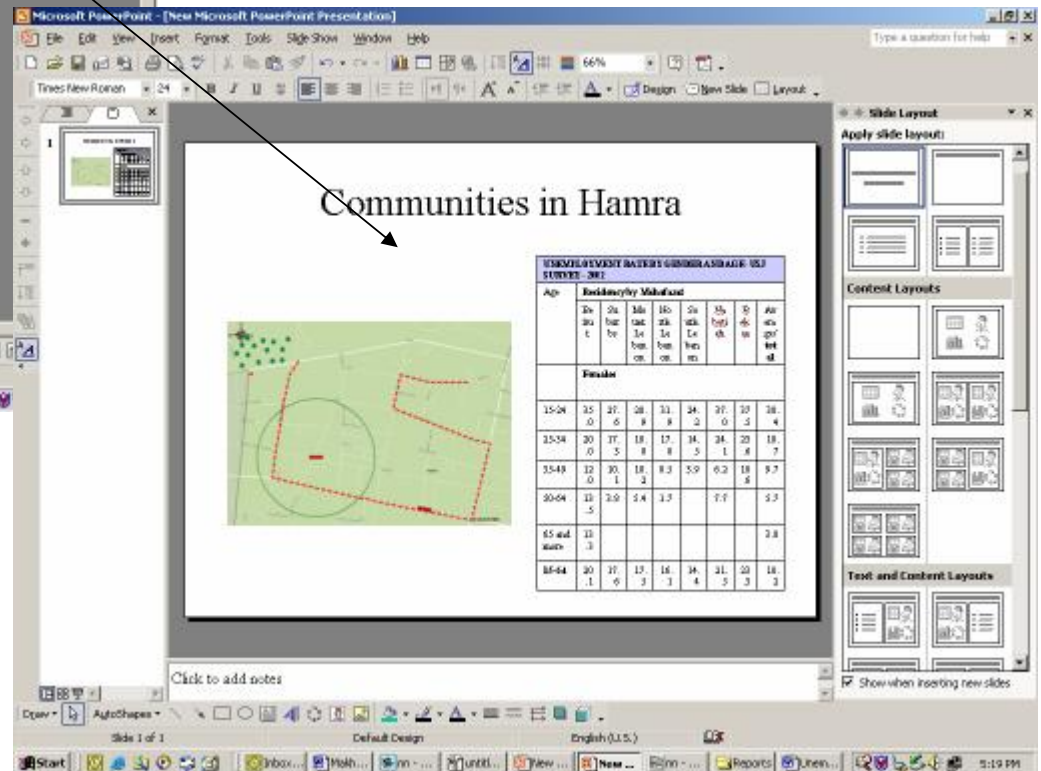
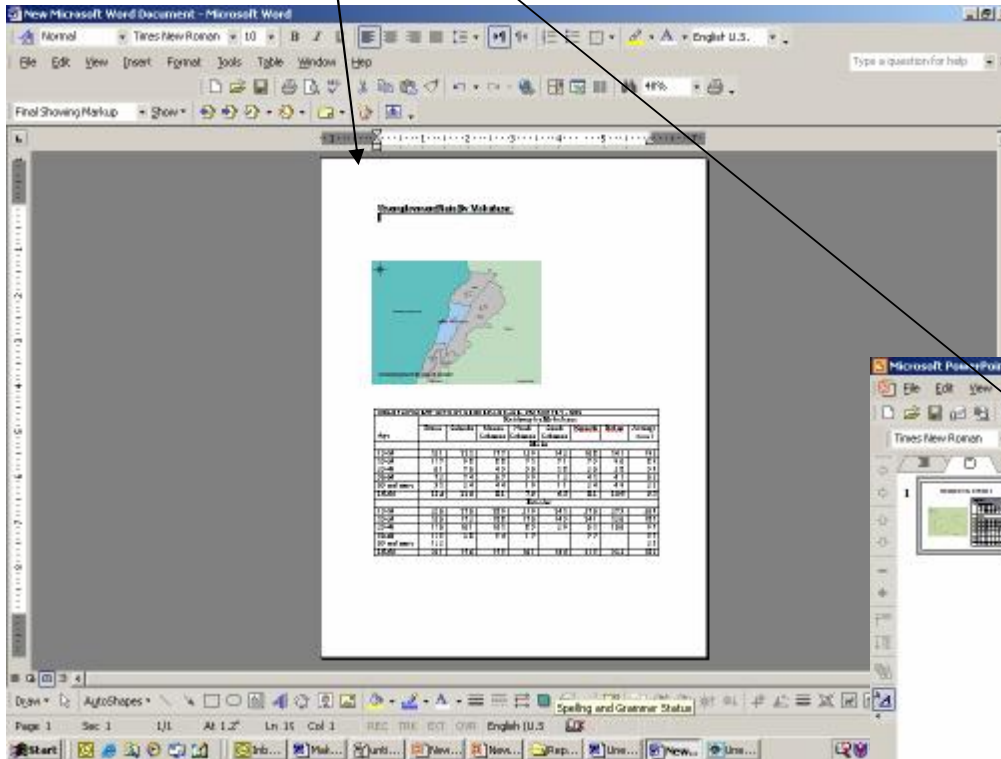
- Template 1
- Template 2
- Template 3



© ArabiaGIS 2003



# Generate Maps to use in Documents & Presentations



2/3/2005